



Rototuna
PRIMARY SCHOOL
HE RAWE MO AKETONU - OUR BEST ALWAYS



CONTACT US

Phone: 07 853 2470

Fax: 07 853 2471

Email: principal@rototunaprimar.school.nz

Web: <http://ultranet.rototunaprimar.school.nz>

23 Strathmore Drive, Rototuna 3210

PO Box 28041, Horsham Downs, Hamilton 3256



Dear Parents, Whanau and Carers,

I hope that you were able to take advantage of some fine weather over the long weekend to spend time relaxing with family. It is the last long break before the busy period leading up to Christmas.

Our students/akonga have settled well and hard work is happening in all classrooms as teachers work to get children to the best possible levels before the end of the year.

Celebration Spotlight Term 3 Week 10

Sahana Dabas Manuka 4 is a Kaimahi Takitahi/Self Manager and a Kaimahi-a-ropu/Team Player. She is always motivated to do her very best with all of her learning, highly organised and focussed. Sahana actively looks for ways to help others and her positivity and friendliness brings a sparkle to our hub.

James Schuster Manuka 4 is a Kaiwhakaaro/Thinker and a Kaimahi-a-ropu/Team Player. He strives to achieve his goals and makes connections between his learning daily. He loves a challenge and confidently shares his thinking with others. James ensures those around him are treated with kindness and respect, being the ultimate 'bucket filler'.

Regan Davidson Manuka 4 is a Kaimahi-a-ropu/Team Player and a Kaikokiri/Risk Taker. His friendly and positive attitude shines through in everything he does and is highly appreciated by those around him. He has a can-do approach to all challenges and strives to achieve his goals, helping his peers to achieve success also.

Michael Wang Manuka 4 is a Kaimahi Takitahi/Self Manager and a Kaiwhakaaro/Thinker. He diligently works towards achieving his goals, even when they are tricky, ensuring he understands what each step requires. His organisation is reflected in his excellent progress and high standard of mahi.

Mea Scrivener Manuka 1 Mea is a Kaimahi Takitahi/Self Manager and Kaimahi-a-ropu/Team Player. Mea works hard and makes sure she is ready for learning. Mea is always willing to help anyone in Manuka, she uses her initiative helping others without having to be asked. Mea we love how kind and caring you are to everyone.

Daejahna Allatt-Wade - Manuka 1 Daejahna is Kaikokiri/risk taker, she sets herself goals, persevering and being self motivated to achieve them. From her monkey bar challenges to her reading and writing and sharing at reflection Daejahna's 'have a go' attitude is reflected in her excellent progress.

Luka Hood – Maunka 1Luka is a Kaiwhakaaro/thinker and a Kaiwhakawhiti korero,/Communicator. Luka makes connections in his learning and is always keen to contribute and share his ideas with others. Ka pai Luka!

Cole Myburgh Manuka 1 Cole is a Kaimahi-a-ropu/Team Player. He works well in a group, sharing equipment, making sure everyone is included and has a turn. Cole's friendly, positive manner can be seen in everything he does. Tino pai Cole!

Camryn Luke Room 11 is a Kaimahi Takitahi/Self Manager and a Kaimahi-a-ropu/Team Player. She is determined to be successful with her learning and works quietly but confidently to achieve her goals. Earlier in the term, Camryn even did extra Cross Country training at home! Camryn's ability to manage herself sets a good example for others in her class. She works well with anyone in Room 11 and encourages them to be their best always.

Mackenzie Van Kampen Room 11 is a Kaimahi-a-ropu and a Kaiwhakaaro. She works extremely well in group situations and shows excellent, quiet leadership. Mackenzie uses her initiative and quietly supports others without needing to be asked. She looks for ways to be helpful and always does a good job. Mackenzie has an enquiring mind and is always thinking 'outside the box' to share new ideas in her reading and maths groups.

Emma Lovell Room 11 is a Kairangahau/Researcher and a Kaikokiri/Risk taker. Emma is always looking for interesting facts and information to add to her writing. She does this incredibly well by choosing the best information that she finds that matches her writing purpose. Emma takes risks in all areas of learning - especially writing. She is always excited to learn new spelling goals and works hard to achieve her Language Plays - even when she is not sure if she is right.

Olivia Kemp Room 11 is a Kaimahitaki taki/self manager and a Kaiwhakaaro/Thinker. She always has her tools for learning ready to go and can consistently be relied on to complete her independent work to a high standard. Olivia thinks and reflects on her learning to see if she can make any improvements before seeing the teacher. She thinks about and supports her classmates and cares for others on the playground.

Parent Meeting

We will be holding our annual meeting this Thursday 25 October at 6.30pm in the Hall. At the meeting we will share the school organisation for 2019 and how you will be informed about children's classrooms for 2019.

Recently we have surveyed parents, teachers and students about goals for our strategic plan. These will be also shared.

This week we began preparations for some work for next year on being culturally responsive educators. This will be explained too. Finally we will be joined by our Board Chair Rob Willetts to update you on the school building programme.

As you can see there will be lots to share as we want to be transparent as possible. I look forward to seeing you tomorrow night.

Culturally Responsive Meeting

The schools in our area are beginning a programme next year to ensure that we have culturally responsive teaching in our schools. There will be opportunities for teachers to have professional development.

The providers of the course are going together information about the current practices in schools. They will do this by do observations in classrooms. This will happen in our school on Thursday. Following that I will let you know of a link to a site so that parents can have an opportunity to express their views. Teachers will also have input and children/ students from Year 4 to 13 will have a questionnaire they will complete in school time.

Two types of reports will be generated. One will be for each participating school and is confidential to the school. The other report will be for the whole groups of schools and will identify strengths and areas for development. This part of the process will not be finished until well into term one next year as the last schools do not start until the end of February.

I look forward to the community participation in the process and I thank you in advance.

Spell-a-thon

As I have visited rooms or talked to children over the past week I have delighted to see there spelling words and talking about sponsors for the Spell-a-thon. Please keep encouraging children at home. The money raised will provide further devices.

No Parking or Drop Off at Waikato Orthodontic Centre Thomas Road

Please respect this business carpark is for customers who are attending an appointment. It is not to be used for school parking or drop off/pick up of students.

Hats

Rototuna Primary School is a Sunsafe School. As part of the plan to help children avoid sunburn in Terms 1 and 4 all children are required to wear a hat outdoors. It can be any colour as long as it has a wide brim (bucket hat, cricket hat or legionnaire hat which includes a flap to shade the neck. Children who do not have hats have to remain in shaded areas (by the Hall).

Caps are not permitted

Disco - CHANGE OF DATE!!

Friday 9th November Halloween Disco - come and have a spooktacular time!

5:30 - 6:30 Juniors (yrs 0-3)

6:45 - 8:15 Seniors (yrs 4 - 6)



Gold Coin Entry

Photobooth, Pizza, Lollies, Ice cream, Drinks. Novelty Items for sale.

Important Dates in October

Thursday	1/11	Postponement Day Year 3 and 4 Athletics 6.00pm Rototuna School Cultural Evening in the Hall
Tuesday	6/11	Year 5 and 6 Athletics Day at school. Postponement day Thursday 8 November
Tuesday	20/11	Interschool Athletics at Southwell School. Postponement day Thursday 22 November
Thursday	25/10	Choir are participating in the Big Sing at Southwell School
Tuesday	27/11	Junior School Athletics Day at School. Postponement day Thursday 29 November
Monday	29/10	Board of Trustees Meeting at 6pm
Class End of Term Party		Friday 7 December or Monday 10 December - you will be told what day your child's class will be having their end of year class celebration
Tuesday	11/12	Year 6 School Leaders Function at 6.00pm - this will be held at school
Wednesday	12/12	Service to School Celebration at 9.30am
Friday	14/12	END OF TERM School will finish at 12.30pm

Calendar Orders

For those of you that missed out on ordering we will open the orders again - these will remain open until **FRIDAY 26 October**. We can't accept late orders.

Year 3 and 4 Athletics

This event will be held in the school grounds from 9.30am. Children will be kept busy all day with activities.

They will need hat, sunscreen and appropriate clothing for the athletic events. They may also need a drink bottle ,snacks and appropriate foot wear. The postponement day 1 November.

All of our performing Arts groups will be sharing their skills in the school Hall beginning at 6.30pm. **Participants need to be at school by 6.00pm and the Kapahaka need to be at school by 5.45pm.**

P.T.A

The P.T.A met last week and agreed to some exciting developments for the school. There are going to be a number of fitness items/equipment installed around the Tawa and Rimu Hubs. They will be set in artificial turf to avoid these areas becoming muddy.

There is another slide being installed on the bank where flax grows near the Kowhai hub. There will also be two ropes so that children can climb back up the bank to have another turn.

The P.T.A has worked hard over time to raise \$57,000 for these projects. They have been on hold until it was clear where classrooms would be built. We don't have the installation dates but the equipment has been ordered. These projects will provide further exciting areas in our playground.

I thank the P.T.A for all the work that went into the fundraising.

Celebration Change

As a growing school with now 970 students, there comes a time when we may need to trial something different. From our recent staff surveys, there have been suggestions that we consider a trial to have two celebrations - one junior and one senior. This would support Health and Safety expectations of fewer students, staff and whanau in the hall at one time.

We have decided to make a change for Term 4 to begin this week.

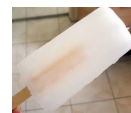
9.10am - 9.45am: Senior Celebration (Y4, Y5, Y6)

10.00am-10.40am: Junior Celebration (NE, Y1, Y2, Y3)

	JUNIOR CELEBRATION	SENIOR CELEBRATION
Week 2	Room 3 - Sarah Manuka 2- Ros Digital Presentation: Totara Hub	Room 12 - Deanna Digital Presentation: Totara Hub
Week 4	Room 1 - Alie Manuka 3 - Hazel Digital Presentation: Room 15	Room 13 - Nicola Digital Presentation: Room 15
Week 6	Room 7 - Ashleigh Manuka 5- Vanessa Digital Presentation: Room 17	Room 21 - Jaspreet Digital Presentation: Room 17
Week 8	Kowhai Hub - Jen Kahikatea - Maria Digital Presentation: Year 1	Is there a class or team that would like to share? Digital Presentation: Year 1
Week 9	Whole School Service to School Celebration	

Ice Blocks

The P.T.A will be selling lemonade ice blocks on Fridays at lunchtime from Ricky's Shed these are \$1.00 please bring correct change.



**Gymnastics
In Schools Programme
Enrolment Form**



www.hamcitygymsports.co.nz office@hamcitygymsports.co.nz 849 4546

**Rototuna School
Term 4 2018**

Rototuna School Hall
Lunchtimes
\$70 for 8 weeks

Starting Wednesday 24th Oct Finish 12th Dec

☐ Year 0-6 Wednesday Lunchtimes

Childs Name: _____

Age: _____

Contact Phone: _____

Email: _____

Please find enclosed **\$70** as confirmation of enrolment.
Please make cheques payable to Hamilton City Gymsports.
Alternatively you can Internet bank:
Westpac 03 1559 0020891 00

Parent/Caregivers Signature: _____

creative :Garden maintenance

- Garden Makeovers
- Planting (creative)
- Small colourful Flower Beds - to attract Bee's
- Edible Gardens - including herb & vege
- Trim Shrubs/Smaller Hedges
- Courtyards (Pots)
- Pruning – incl. Fruit Trees & Roses
- Use Organic Products
- Renovating & Revamping Gardens



EXPERIENCE IN SMALL & LARGE PROPERTIES

Jills Garden & Maintenance Services
Phone – 0274 582 136

"I will prune your vine
& give you the fruits"



Hiya kids... welcome back!

I can't believe it's term 4 already! I hope you all enjoyed your holiday! I spent heaps of time outside on my bike with my friends. I noticed how all the trees have gone bright green with all their spring leaves. It got me thinking about how important trees are! So I'm going to teach you all about how we need to take care of our trees, and how we need to plant more! How about you have a go at planting a tree? Send us a photo and you could win \$50 for your savings!

Stay cool super savers!

Let's talk about... trees!

Amazing Tree Facts!

A family of four can get all the oxygen they need for a whole year from just one full grown tree.

Some trees can grow to around 100 metres in height!

Trees can live for thousands of years.

In a year, ONE average tree can remove 1 tonne of carbon dioxide from the air.

Trees help cool the earth down by cooling the ground and air around them.

TREES ARE NOT JUST COOL TO CLIMB - THEY ARE ESSENTIAL FOR OUR PLANET! TREES PRODUCE OXYGEN AND REDUCE THE AMOUNT OF CARBON DIOXIDE IN THE ATMOSPHERE...SO POLLUTION FROM CARS AND FACTORIES CAN BE KIND OF CANCELLED OUT BY TREES - COOL HUH!

WHY ARE TREES SO IMPORTANT?

As well as producing oxygen, trees are an important habitat for birds, insects and animals. Trees provide shelter and shade. Forested areas slow the flow of rain water, allowing it to soak into the soil. When trees are removed, water is unable to soak into the soil and, instead, runs off the surface at a faster rate. This can push pollutants into our streams, rivers and lakes.

...and that's bad news for me!

WHERE HAVE ALL THE TREES GONE?

Before humans, almost all of New Zealand was covered in forest. Humans began clearing forests for farmland and to use the wood for building. Only 25% of New Zealand is now covered in native forest. This deforestation has happened all over the world and pretty soon all the forests will be gone unless we make changes.

WHAT'S THIS ONE BILLION TREES GOAL?

The New Zealand Government has set a goal to plant **one billion** trees over the next 10 years. They are encouraging planting of both permanent trees and forests that can be harvested in the future. All of us kiwis should get involved to try and achieve this target.

WHAT CAN YOU DO?

Planting a tree at home is a great way to start! You can watch it grow every day and breathe in all that wonderful oxygen! There are lots of school and environmental groups that are involved in planting trees in our communities. Ask your parent or guardian if you can volunteer to help!

I down 999,999,999 to go!

That's one billion!

do your bit! plant a tree!

1 billion is a HUGE number...

Wouldn't it be great if every New Zealander did their bit to help Can you plant one tree to help with the 1 billion trees target? Send us a photo of you planting a tree and two lucky kids will win \$50 for their savings!



Here's some great pics of our First Credit Union staff doing their bit - planting trees in our community!

Hey mum! Hey Dad!

Make next Christmas stress free and easier on your account!

Our Christmas Club savings account will help you get ready for the silly season! Save as little as \$5 a week and you will have \$240* to spend over the festive season. You'll earn a great interest rate on your savings. Funds become available in November, so you can't dip into it during the year!

*Savings calculated from the first week of January to the last week of November.

Keep your eyes open for this chance for your school to meet with First Credit Union and Office Products Depot

OFFICE PRODUCTS DEPOT

WIN \$50

Email us your photo to marketing@firstcu.co.nz before **Friday 14 DECEMBER 2018**! You can also print your photo and send it in with your school banking passbook, bring it in to a First Credit Union branch, or post it to PO Box 585, Waikato Mail Centre, Hamilton. **Don't forget to include your name, address, age, school and phone number with your entry!**

congratulations!



Congratulations to the winners of our Hidden Pets Wordfind competition - **Max Balmer** from Maungatapu Primary School, and **Talia Good** from Whakatane Intermediate School.

Congratulations! You've both won \$50 for your savings!

final funny...

Q: What did the little tree say to the big tree?

A: Leaf me alone!

If you're not a First Credit Union member, ask your parents if you can open a Kids' Account today! Just pick up a School Banking pack from your school office, or visit one of our branches.

first credit union

Proud to be a registered Credit Union, not a registered bank. First Credit Union deposits are shares secured by a first ranking registered trust deed. A Product Disclosure Statement is available.

FIRSTCU.CO.NZ

ENDEAVOUR SCHOOL

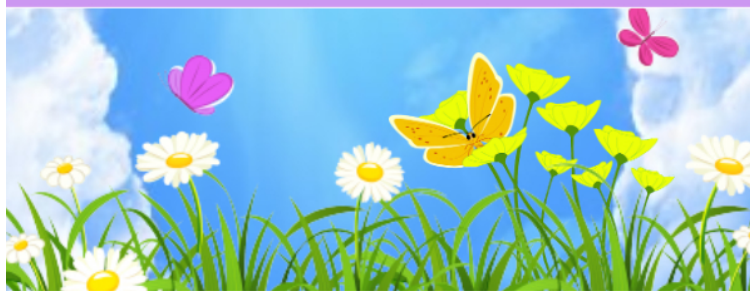


Spring festival



SAT 27TH OCT - 1PM TO 6PM

Come and join us for a day filled of Bouncy
Castle Fun, Delicious Food, Sandpit Dig,
Auctions, Face Painting and much more!!!



All funds will go toward our Sun Shade project

Posted by Wall.com

FAMILY FUN



NEW WORLD
Rototuna



HUKANUI SCHOOL

GALA

SAT 3 NOV
10AM - 2PM

GAME STALLS

YUMMY FOOD

GARAGE SALE

& MORE



**FREE
ENTRY**



hillcreative
THE ART OF BUSINESS

